
Subject: Fwd: WGS: Hong Kong Sapphire Update

Date: January 18, 2012



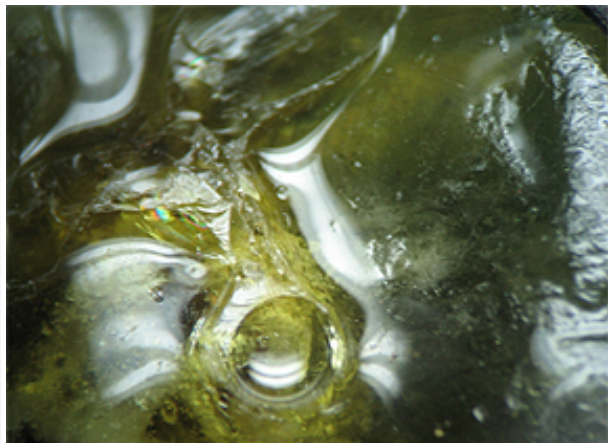
a publication of the World Gem Society....17.January.2012...

WGS: Hong Kong Sapphire Update

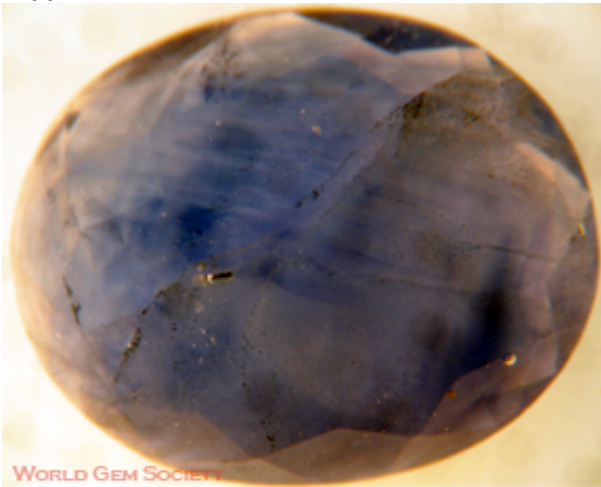
Important Note: The following issues are restricted to sapphire dealers from Hong Kong, China. We have purchased on the open market sapphires from dealers in the US, Canada, Australia, India and others with few significant problems related to proper disclosure of various sapphire treatments. The update below is entirely relating to sapphire dealers in Hong Kong. We want to be sure that consumers know that while this is a serious problem, it is restricted to a specific and verified group of dealers of whom we are aware. We continue our efforts to test and report on these issues for the benefit of the industry.

Glass Filled Green Sapphire

We recently purchased a 91.83ct green sapphire rough crystal from a noted sapphire dealer in Hong Kong. As you can see below this sapphire is in the same condition as the glass filled rubies that have become so prevalent in the industry. This is the first time we have been able to document through specimen the use of glass fillers in corundum other than ruby, but it is obvious that all sapphires are going to need to be inspected for possible glass infilled treatment. This sapphire was represented to us as "all natural and untreated". While the crystal was confirmed as a green sapphire by Raman, the images speak for themselves regarding the glass infilling treatment.

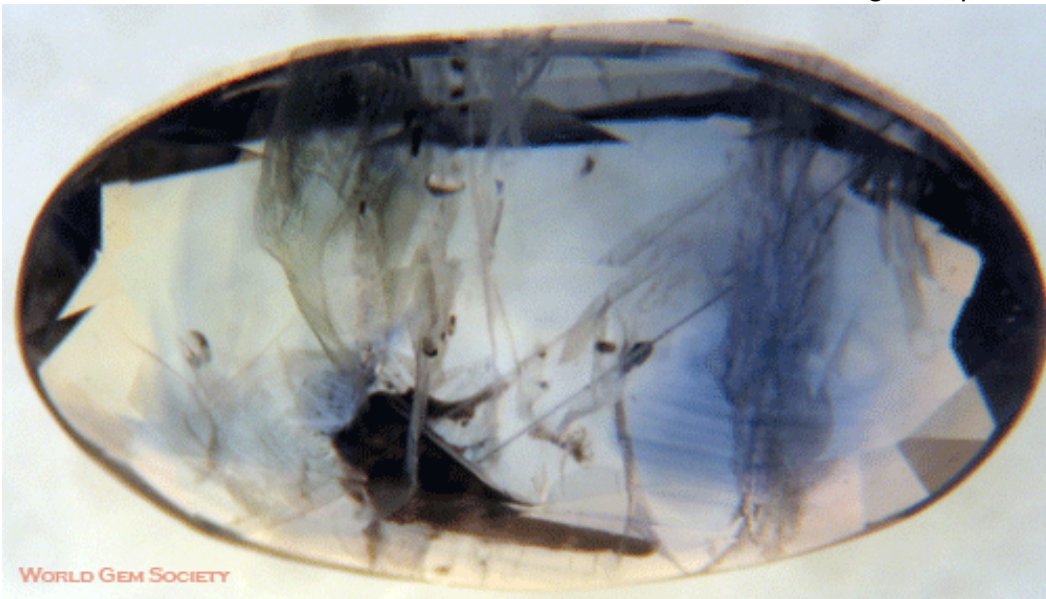


Sapphire Color Infusion

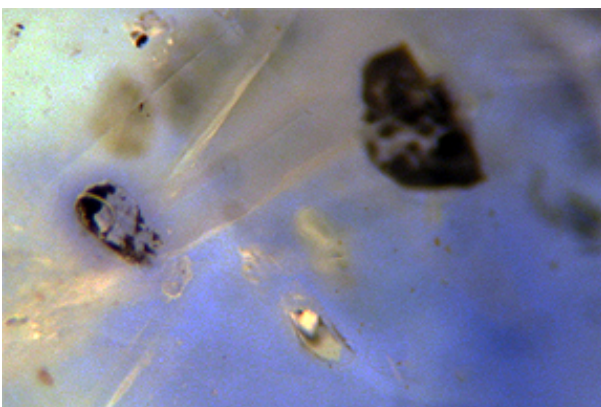


WORLD GEM SOCIETY

We continue to receive specimens of color infused sapphires from Hong Kong dealers. As seen at left, the color formation in these stones gives away the true nature of the color. These appear very much like some of the early beryllium diffused sapphires when viewed in an immersion cell. Below is a slide set of another specimen showing the color that we believe traveled into the stone through a fairly large open fissure, then spread within the stone along the crystal growth planes or faces. The concentration of colors around fissures and other features in these sapphires gives the indicators for the presence of this infused color material. The arrows denote the apparent path that the color infusion material took to enter the stone and then travel for a short distance along the crystal faces.



WORLD GEM SOCIETY





Perhaps the most telling image is seen at left. Although we believe the mechanics are much different, the blue color concentrations appear around internal features the same as the blue halos in beryllium treated sapphires. However, these sapphires show significantly different features in other areas that more closely emulate other color infused gemstone treatments such as andesine. We believe the Hong Kong dealers may have moved on from andesine to sapphires using essentially the same processes.

Hong Kong by way of Chanthaburi

We do have documentation that certain of these Hong Kong sapphire dealers have set up offices in Chanthaburi, Thailand in what we believe is an effort to appear to be legitimate Thai gem dealers. This is an unfortunate blight being put on the Thai gemstone trade, but one for which we have no solution to offer other than "buyer beware".

With the Tucson Gem Shows fast approaching we felt it necessary to inform buyers and consumers of the above. Again, these issues are overwhelmingly centered around Hong Kong sapphire dealers.

We want to stress that open market purchases made by the World Gem Society from dealers in India, Australia, Canada, USA and other locations have shown no significant problems other than what is reasonably expected on any given day in the open gem markets.

We have more updates coming for the Tucson Gem Show buyer preparations.



If you have problems viewing these images we invite you to visit the World Gem Society Forums to see this article in its entirety. Click on this link: WGS [Hong Kong Sapphire Update](#)

If this information is of assistance we invite you to support this effort by joining the World Gem Society to help further ethical selling in this industry. To visit the World Gem Society website use the icon below:



©2012 World Gem Society. ALL RIGHTS RESERVED. We encourage sharing of information as long as all copyrights are left intact.

International School of Gemology | info@worldgemsociety.org | San Antonio, TX 78230